



# GAT MONTHLY MEMBERSHIP PROGRESS REPORT

Results as of: 3/31/2024

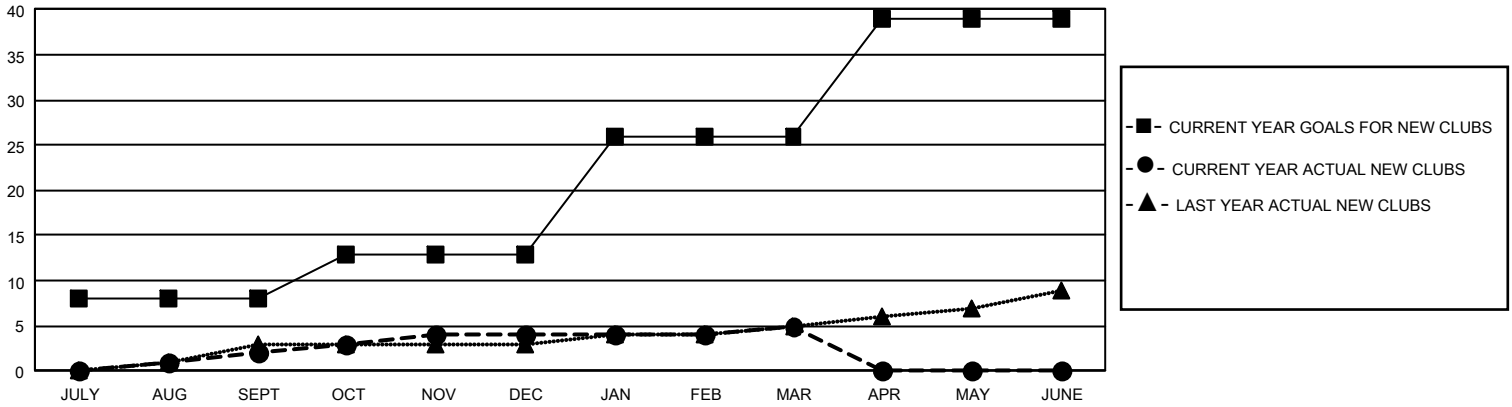
## GMT Constitutional Area 1, Group B

REPORT DOES NOT INCLUDE CLUBS IN UNDISTRICTED AREAS.

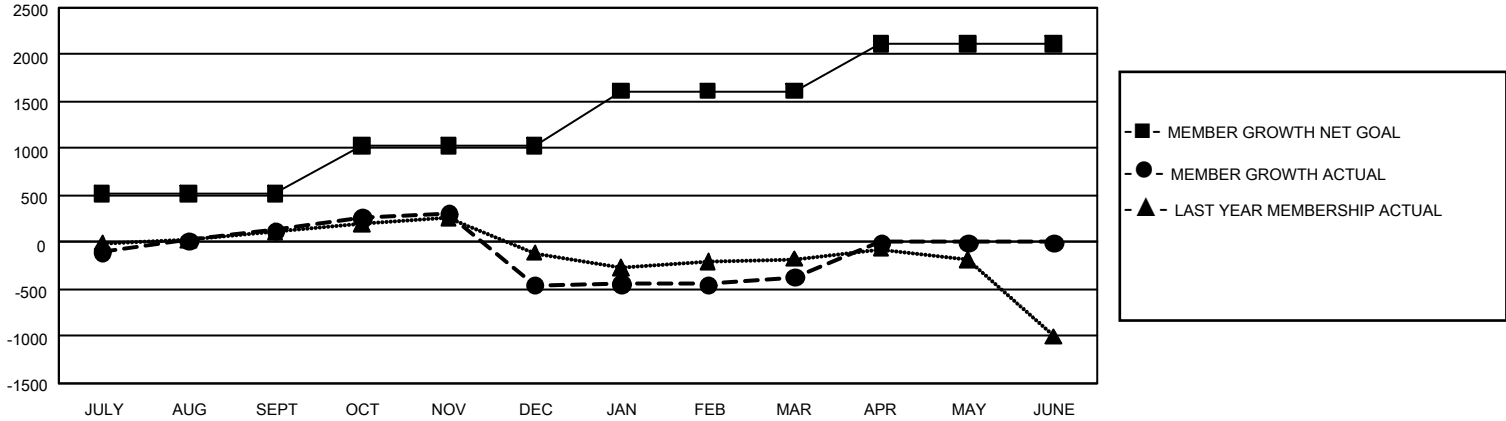
Clubs			
RESULTS FOR 2023-2024			
QUARTER	NEW CLUB GOAL	NEW CLUBS	DROPPED CLUBS
JULY/AUG/SEPT	24	2	5
OCT/NOV/DEC	15	2	26
JAN/FEB/MAR	39	1	8
APR/MAY/JUNE	39	0	0

Members			
RESULTS FOR 2023-2024			
QUARTER	MEMBER GROWTH NET GOAL	MEMBER GROWTH ACTUAL	DROPPED MEMBERS ACTUAL (including transfers)
JULY/AUG/SEPT	518	1,246	971
OCT/NOV/DEC	511	849	1,347
JAN/FEB/MAR	582	986	761
APR/MAY/JUNE	501	0	0

GOALS AND ACTUAL NEW CLUBS CUMULATIVE



GOALS AND ACTUAL MEMBERS CUMULATIVE



<b>DROPPED CLUBS: 39</b>  <b>DROPPED MEMBERS</b> DECEASED 324 CLUB CANCELLED 319 OTHER 2,438 <b>TOTAL 3,081</b>	589 CLUBS OF 1,018 ADDED 1 OR MORE NEW MEMBERS	<b>GENDER DISTRIBUTION</b> MALE 15,564 (57.72%) FEMALE 11,379 (42.20%) NON BINARY 3 (0.01%) PREFER NOT TO ANSWER 20 (0.07%)
	<a href="#">CLICK HERE FOR CUMULATIVE MEMBERSHIP DATA</a>	TOTAL FAMILY UNIT MEMBERS 5,485 FAMILY MEMBERS PAYING HALF DUES 2,890